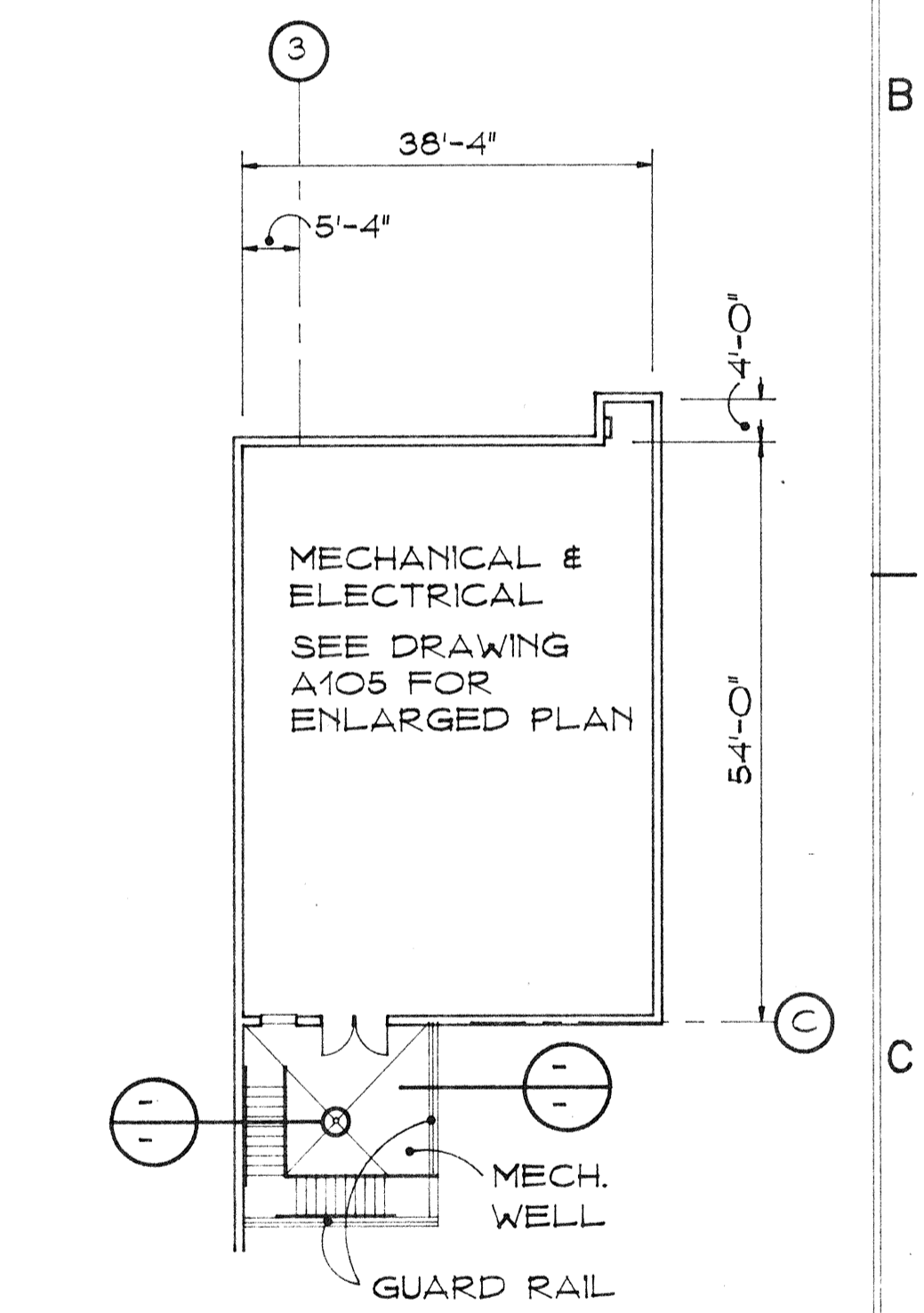
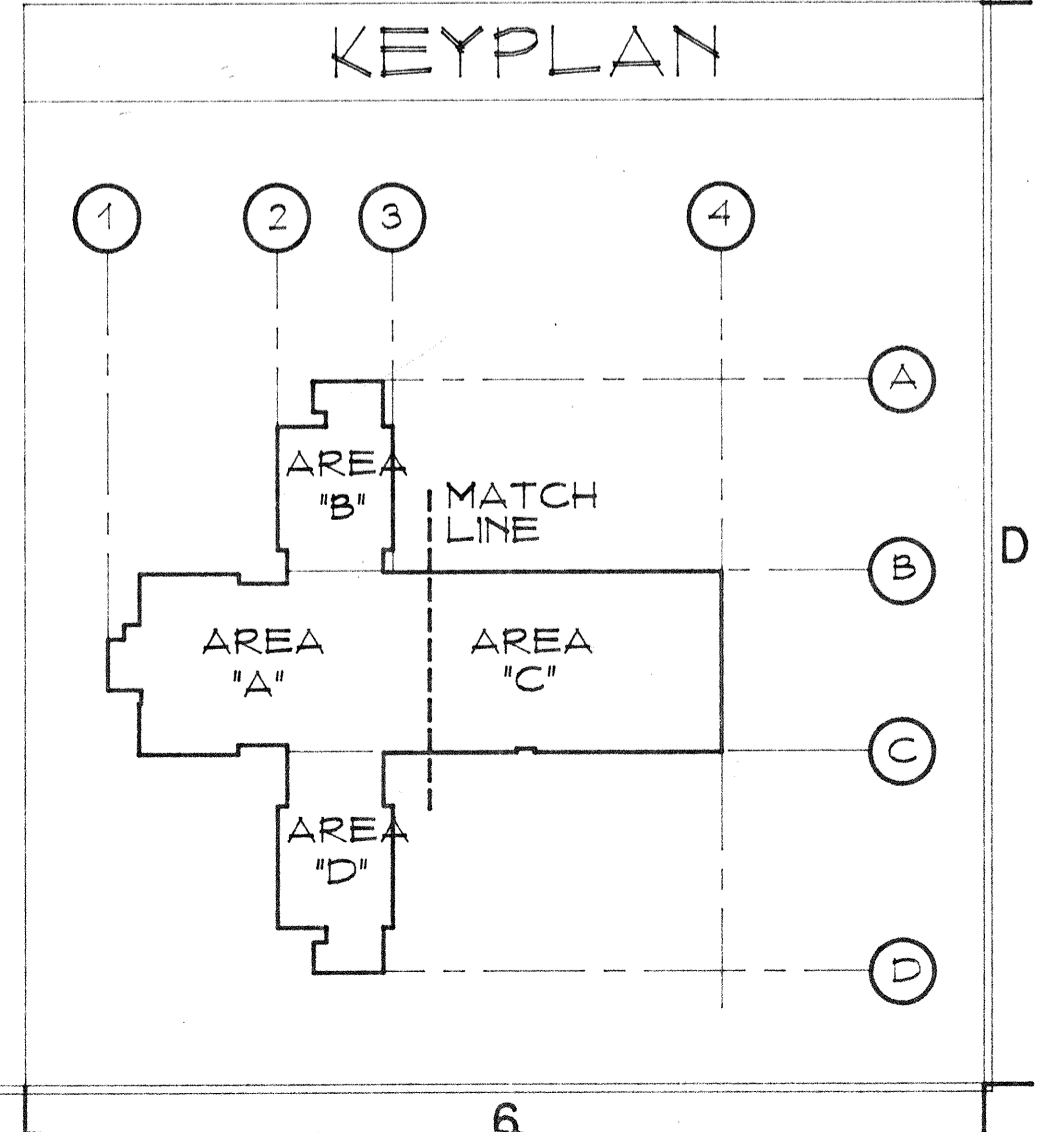


- ### KEYNOTE
- O2231 AGGREGATE BASE COURSE
 - A. COMPACTED AGGREGATE BASE
 - O2544 PORTLAND CEMENT CONCRETE PAVING
 - A. CONCRETE PAVING 4" THICK UNLESS OTHERWISE NOTED
 - O2720 STORM SEWAGE SYSTEMS
 - A. CONCRETE CATCH BASIN
 - B. STEEL INLET GRATE
 - C. PVC STORM SEWER PIPE & FITTINGS
 - O2831 CHAIN LINK FENCES AND GATES
 - A. VINYL COVERED CHAIN LINK FENCE
 - O2950 TREES, PLANTS, AND GROUND-COVER
 - A. 1" - 2" DIA. WASHED GRAVEL OVER WEED BARRIER FABRIC
 - O5520 HANDRAILS AND RAILINGS
 - A. 1-1/2" DIA. STEEL PIPE RAIL
 - O6114 GRIND ALL WELDS SMOOTH
 - O6114 WOOD BLOCKING AND CURBING
 - C. 4 X 8 X 3/4" PLYWOOD PANEL
 - 10350 FLAGPOLES
 - A. STEEL FLAGPOLE, GROUND MOUNTED



C6 BASEMENT

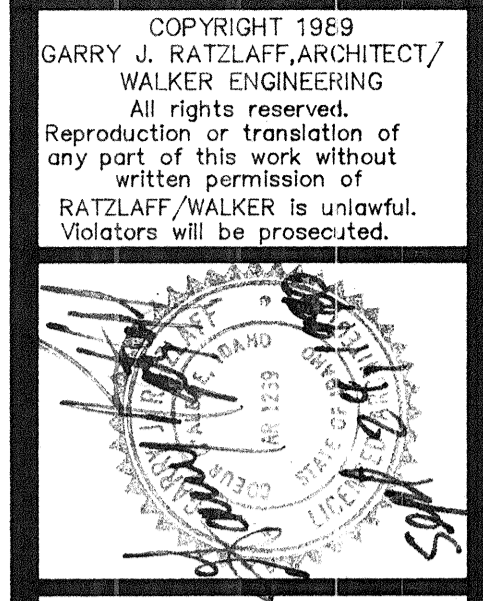
SCALE 1/16" = 1'-0"



D3 FLOOR PLAN

SCALE 1/16" = 1'-0"

66 BEDS
45371 SQ.FT.



GARRY J. RATLAFF, ARCHITECT/
WALKER ENGINEERING
1035 YELLOWSTONE AVENUE
POCATELLO, IDAHO 83206 (208) 234-4028
IN ASSOCIATION WITH
LOMBARD-CONRAD ARCHITECTS P.A.
1221 SHORELINE LANE BOISE, IDAHO 83702

IDAHO STATE
VETERANS HOME
POCATELLO, IDAHO
DPW PROJECT 90-151
DRAWING TITLE:
FLOOR PLAN - OVERALL

JOB NO: M-8919.00 VA
DATE: SEP 19 1966
DRAWN BY:
REVISIONS: DATE:
DRAWING NO. VAAWDFP1
A103
OF